



WHITEPAPER

OPEN-SOURCE VISUALIZATION TOOLS: A DEEPER DIVE INTO APACHE SUPERSET



CONTENTS

1. INTRODUCTION	1
2. LANDSCAPE OF OPEN-SOURCE VISUALIZATION TOOLS	1
2.1 OVERVIEW OF KEY TOOLS	1
2.2 COMPARATIVE FEATURE MATRIX	2
3. DEEP DIVE: APACHE SUPERSET	2
3.1 PROJECT HISTORY & EVOLUTION	2
3.2 ARCHITECTURE OVERVIEW	2
4. FUNCTIONAL CAPABILITIES	4
5. DATA SOURCE COMPATIBILITY	5
6. SUPERSET UI GALLERY	6
6.1 SUPERSET HOMEPAGE	6
6.2 ADVANCED CHART BUILDER	6
6.3 BUSINESS DASHBOARDS	7
7. DEPLOYMENT STRATEGIES	7
8. INTEGRATION BEST PRACTICES	8
9. COMMON CHALLENGES	8
10. CONCLUSION	9

1. INTRODUCTION

As organizations generate and rely on increasingly large volumes of data, the ability to transform this data into clear, actionable insights has become a strategic imperative. Data visualization acts as a vital bridge between raw information and informed decision-making, enabling stakeholders to detect trends, monitor key metrics, and respond swiftly to evolving conditions.

To meet these needs, a wide array of visualization tools has emerged. These range from established commercial platforms to a dynamic ecosystem of open-source solutions. Among these, open-source tools are gaining momentum due to their flexibility, transparency, and active community support. They empower organizations to customize solutions according to their unique requirements.

This whitepaper explores the open-source data visualization landscape, with a particular focus on Apache Superset. It examines the platform's architecture, capabilities, deployment strategies, and real-world use cases, highlighting its role within the modern business intelligence (BI) ecosystem.

2. LANDSCAPE OF OPEN-SOURCE VISUALIZATION TOOLS

2.1 OVERVIEW OF KEY TOOLS

This section provides a high-level overview of key open-source visualization tools widely adopted by data-driven organizations.

Tool	Typical Use Cases	Strengths	Limitations
Apache Superset	Apache Superset BI dashboards, SQL exploration	Scalable, rich SQL support, charting flexibility	Steep learning curve for beginners
Metabase	Quick dashboards, embedded analytics	Easy setup, non-technical friendly	Limited extensibility
Redash	SQL-based dashboarding	Lightweight, fast setup	Feature-limited compared to Superset
Kibana	Log and time-series visualization	Tight integration with Elasticsearch	Focused on ELK stack only
Grafana	Infrastructure monitoring, time-series	Strong plugin ecosystem	Narrow focus on time-series data
Plotly Dash	Custom web apps for data science	Python/JS flexibility, highly customizable	Dev-heavy, less suitable for quick BIx
Observable	Data storytelling, D3-rich visualizations	Reactive notebook style	Steeper learning curve, JS/D3-centric

2.2 Comparative Feature Matrix

Parameter	Superset	Metabase	Redash	Kibana	Grafana	Dash	Observable
Ease of Use	Medium	High	High	Medium	Medium	Low	Medium
Extensibility	High	Medium	Low	Medium	High	High	High
Performance	High	Medium	Medium	High	High	Depends	Medium
Integration	Broad DB support	DBs + APIs	SQL DBs	Elasticsearch	Prometheus, InfluxDB	Python stack	JavaScript stack
Community Support	Strong	Strong	Moderate	Strong	Very Strong	Growing	Niche but active
Licensing	Apache 2.0	AGPLV3	BSD	Apache 2.0	AGPLV3	MIT	MIT

3. Deep Dive: Apache Superset

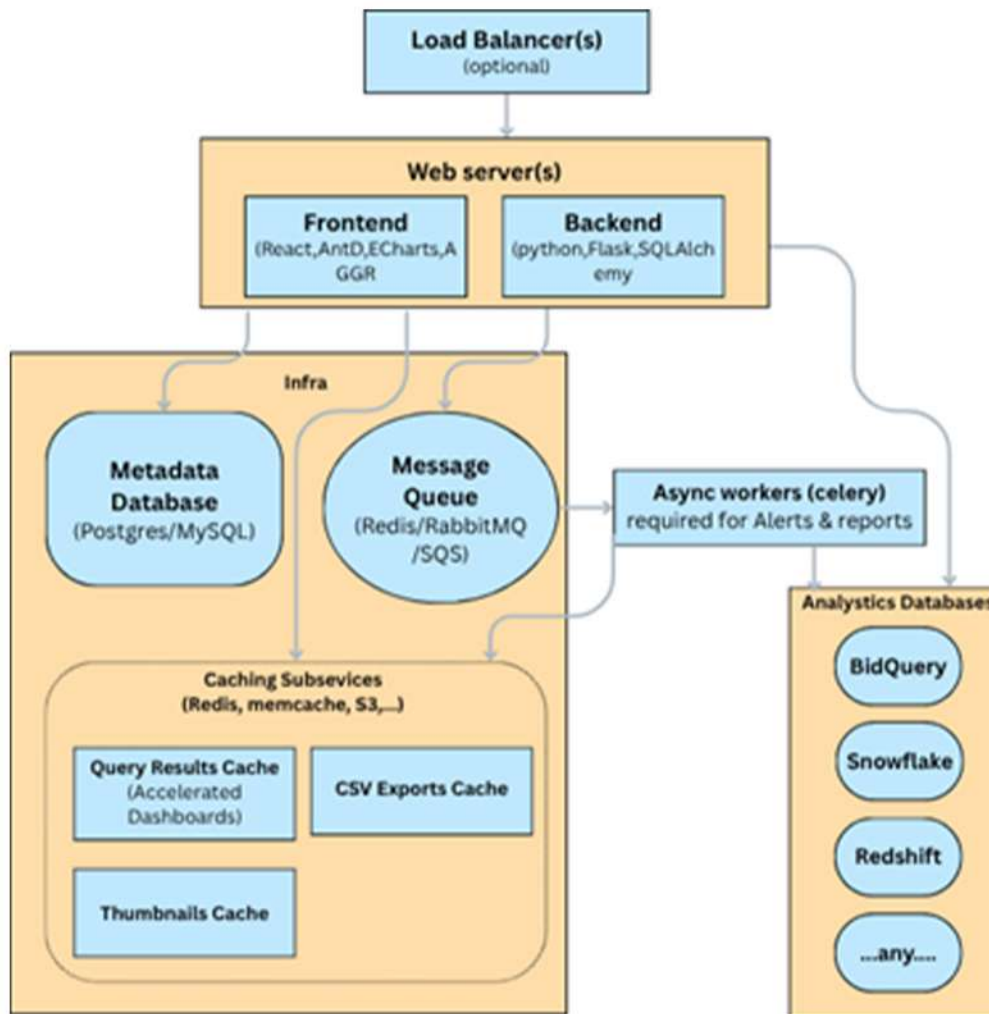
3.1 Project History & Evolution

Apache Superset originated as an internal analytics tool developed at Airbnb during a hackathon. Designed to empower data analysts and engineers with intuitive yet powerful SQL exploration and dashboarding capabilities, it was open sourced in 2016. The project entered the Apache Incubator in 2017 and graduated as a top-level Apache project in 2021, reflecting its maturity and active community engagement.

Superset's adoption by companies such as Dropbox, Lyft, and commercial ventures like Preset highlights its robustness and enterprise readiness. Its evolution reflects a commitment to scalability, extensibility, and democratizing data access.

3.2 Architecture Overview

Apache Superset follows a modern, modular architecture designed for scalability, flexibility, and high availability across both individual and enterprise deployments. The architecture is composed of clearly decoupled components that can be independently scaled and managed.



Key Architectural Components

1. Web Tier

- **Frontend:** Built with React, Ant Design (AntD), ECharts, and AQR for a rich, interactive user experience.
- **Backend:** Powered by Python, Flask, and SQLAlchemy. Manages business logic, security, API interactions, and data connections.

2. Load Balancer(s) (Optional): Distributes traffic across multiple web servers in high-availability environments.

3. Infrastructure Layer

- **Metadata Database:** Stores Superset's internal metadata (dashboards, charts, roles, users). Typically uses PostgreSQL or MySQL.
- **Message Queue:** Coordinates background tasks using Redis, RabbitMQ, or Amazon SQS. Supports asynchronous job dispatching.

4. Caching Subservices

To accelerate performance and reduce backend load, Superset supports multiple caching layers:

- **Query Results Cache:** Accelerates dashboard rendering by storing computed query results.
- **CSV Exports Cache:** Temporarily caches exported data for faster delivery.
- **Thumbnails Cache:** Stores generated chart images for previews and reports.
- **Alert/Report Images Cache:** Used by automated alerts and scheduled reports.

Supported caching backends include Redis, Memcached, S3, and others.

5. Async Processing

Celery Workers: Handle time-consuming operations such as SQL query execution, thumbnail generation, and scheduled reports. These are decoupled from the web server to ensure UI responsiveness.

6. Analytics Databases

Superset connects to external analytical data engines using SQLAlchemy. These include:

- **Cloud data warehouses:** BigQuery, Snowflake, Amazon Redshift
- **Any SQL-compatible database supported via connector plugins**

4. Functional Capabilities

Apache Superset delivers a robust suite of features designed to empower self-service analytics, streamline dashboard creation, and ensure enterprise-grade performance and governance. The platform's capabilities can be broadly categorized into six core areas:

1. Visual Analytics Without Code

Superset offers a drag-and-drop interface that enables users to create interactive and publication-ready visualizations without requiring programming skills.

- Supports over 50 chart types including bar, line, scatter, heatmap, treemap, funnel, bubble, and geospatial plots.
- Built-in plugin framework supports D3.js, ECharts, and NVD3, enabling flexible and dynamic chart rendering.

2. Advanced SQL Lab Environment

For power users and analysts, Superset provides a built-in SQL IDE—SQL Lab—that supports exploratory analysis and complex querying.

- Features include syntax highlighting, intelligent autocomplete, and multi-tab workflows.
- Offers query history, metadata inspection, and schema exploration capabilities for faster query development.

3. Interactive Dashboard Builder

Superset allows users to assemble rich, interactive dashboards tailored to business needs.

- Responsive layout editor ensures dashboards are accessible across devices.
- Filter components such as dropdowns, sliders, and checkboxes enhance interactivity.
- Supports cross-filtering and scoped filtering, enabling dynamic, multi-layered insights across visualizations.

4. Enterprise-Grade Security Model

Security and governance are first-class concerns in Superset, with extensive support for controlled access.

- Implements Role-Based Access Control (RBAC) at chart, dataset, and dashboard levels.
- Compatible with OAuth2, LDAP, OpenID Connect, and database-native authentication.
- Enables granular permissioning across data objects and user roles.

5. Plugin-Based Extensibility

Superset is designed for extensibility, enabling teams to tailor visual and functional behavior to domain-specific needs.

- Create custom charts or controls using React and TypeScript.
- Integrate external data engines or APIs via plugin architecture.
- Support for theming, branding, and interface customization ensures a seamless organiza-

6. Scalable and Performant by Design

Engineered for high-volume, low-latency analytics at scale.

- Asynchronous query execution handled by Celery workers ensures non-blocking user interaction.
- Supports fine-grained caching at chart and dashboard level (using Redis, S3, etc.).
- Optimized for handling millions of rows per dashboard, contingent on backend configuration and indexing

5. Data Source Compatibility

Apache Superset is designed to operate seamlessly with a wide range of modern data warehouses and SQL engines. Its data connector framework, built on SQLAlchemy, enables integration with most relational and analytical backends.

Native Integration



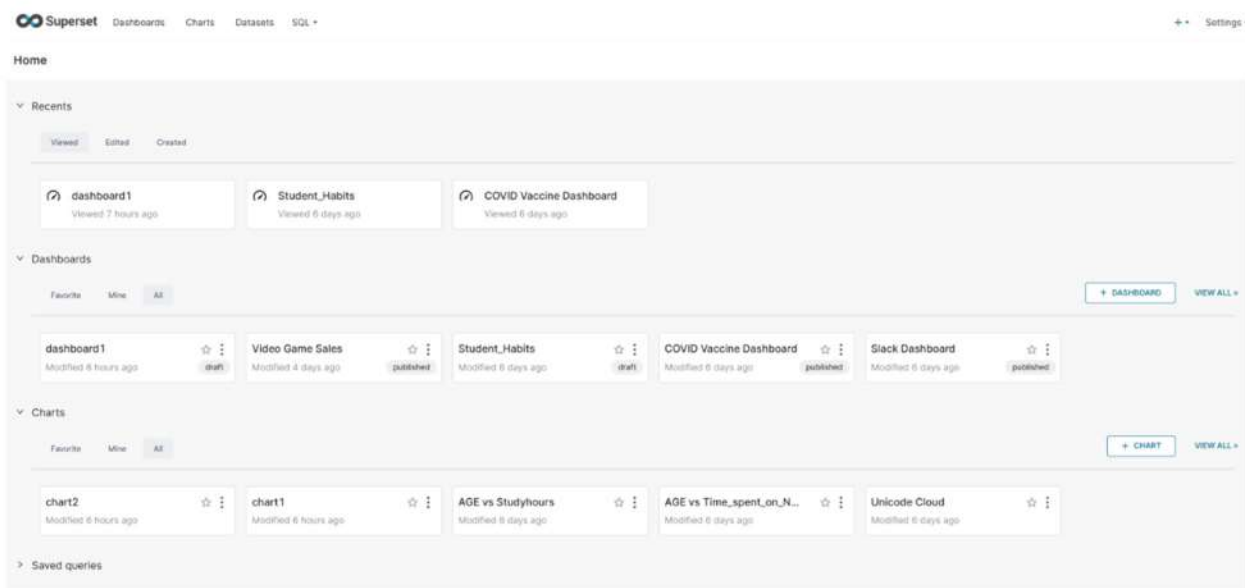
This breadth of compatibility ensures Superset can fit into diverse data ecosystems, from on-premise legacy systems to fully cloud-native architectures.

6. Superset UI Gallery

Apache Superset offers a modern, responsive, and intuitive interface that caters to a range of users—from data analysts to business stakeholders. This section provides a visual overview of the platform’s key UI components

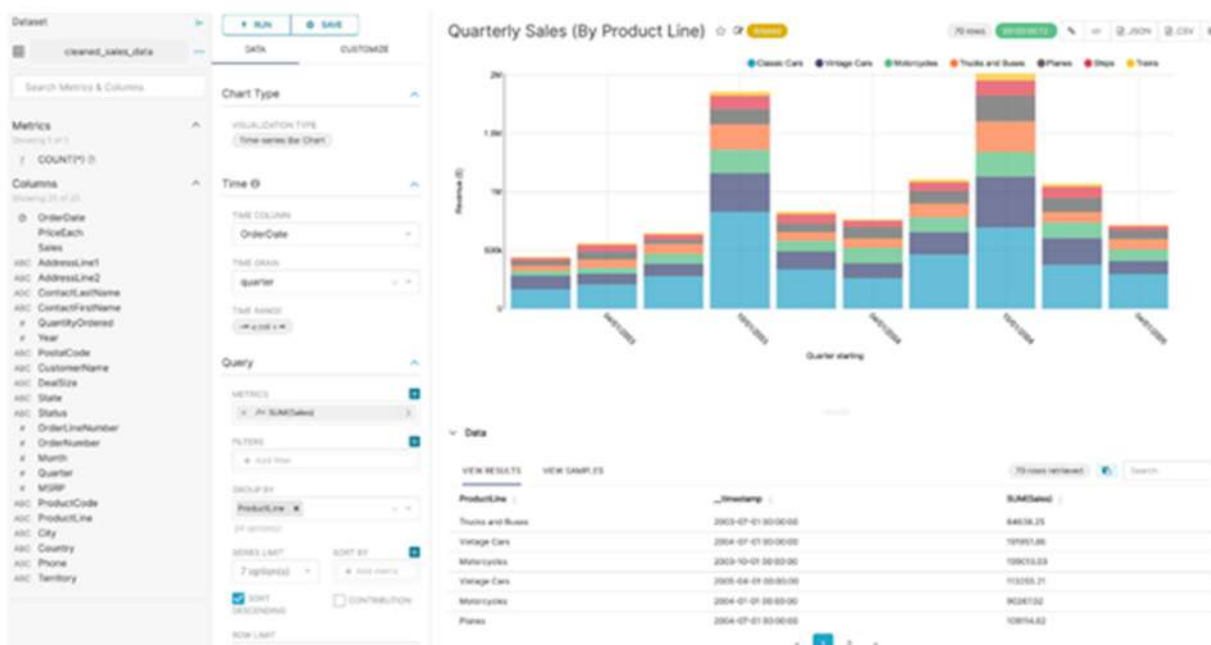
6.1 Superset Homepage

The Superset home interface organizes access to dashboards, charts, datasets, and SQL Lab, improving navigation and productivity for teams managing multiple assets.



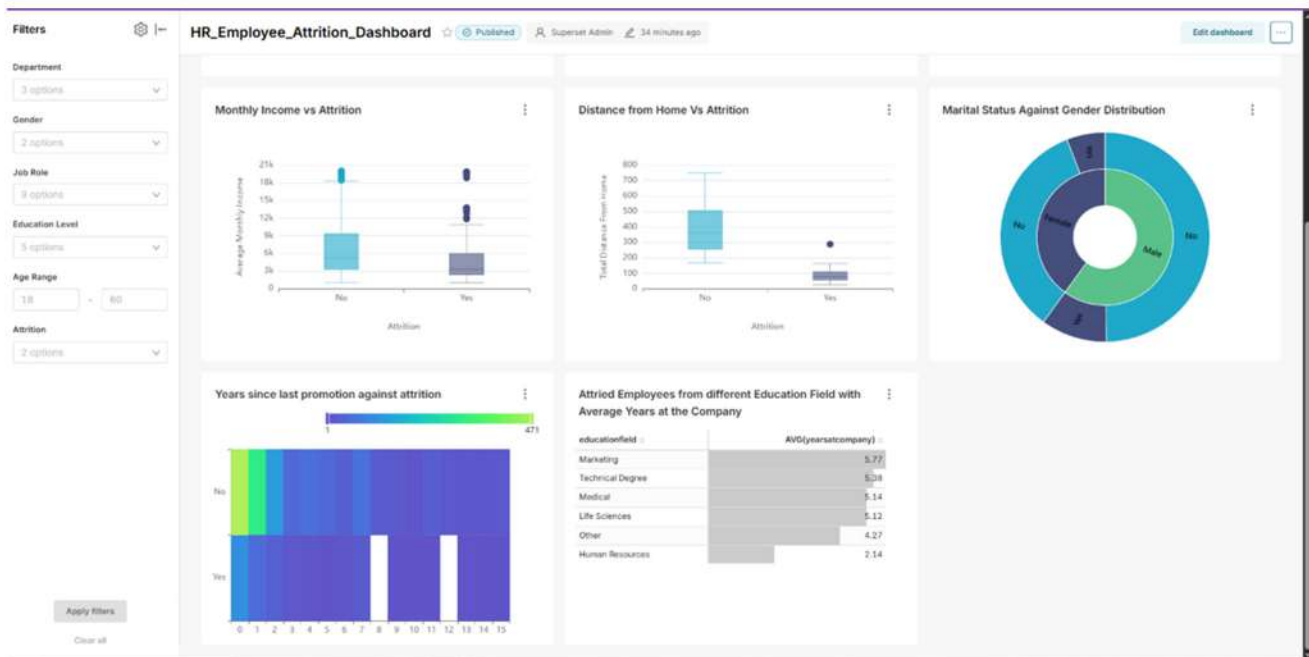
6.2 Advanced Chart Builder

With its drag-and-drop chart builder, users can generate detailed visualizations from SQL-based or drag-based configurations. Multiple chart types and granular settings are supported.



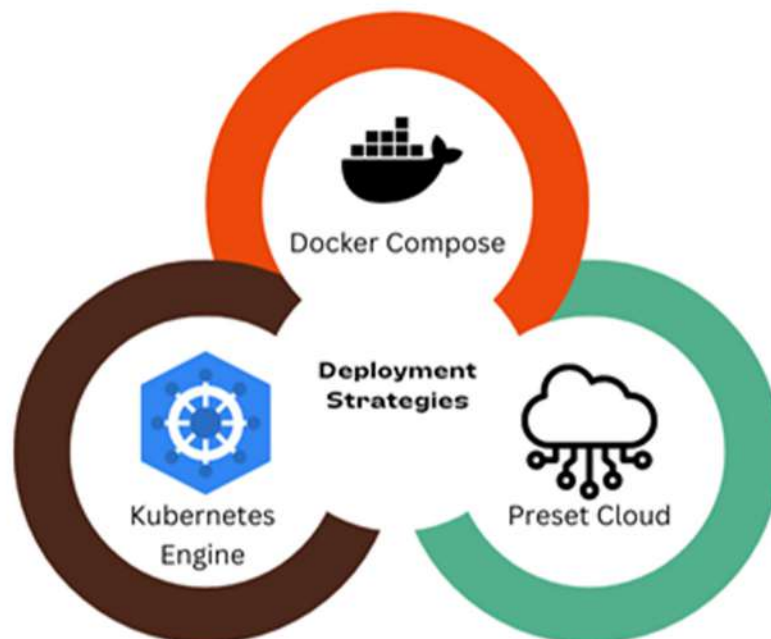
6.3 Business Dashboards

Superset enables the creation of high-impact dashboards, combining charts, KPIs, filters, and maps in a fully customizable layout.



7. Deployment Strategies

Superset offers flexible deployment models catering to diverse organizational needs. from lightweight testing environments to robust, scalable production setups.



Docker Compose enables quick local deployment with demo metadata, ideal for exploration and development. Kubernetes (Helm) supports scalable, high-availability setups suitable for production-grade use. Preset Cloud provides a fully managed Superset instance with enterprise features such as advanced security, role-based access control, and dedicated support, making it suitable for organizations seeking simplified deployment.

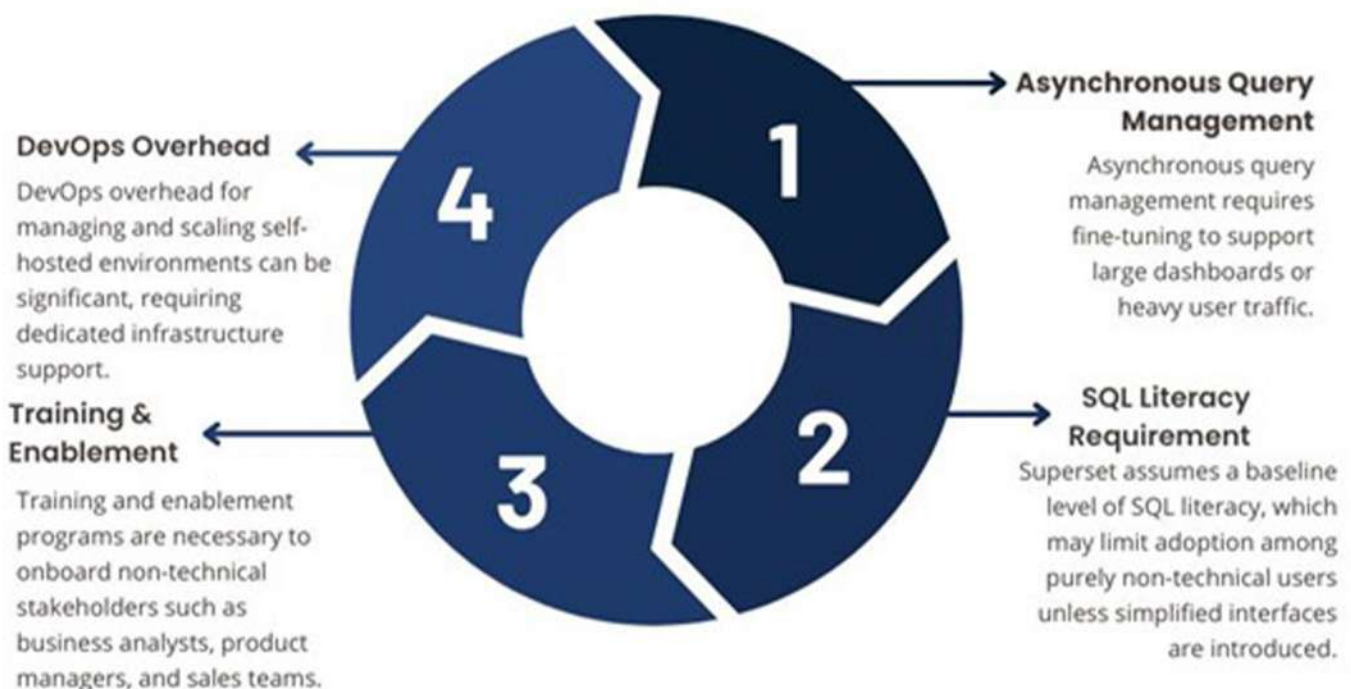
8. Integration Best Practices

To maximize performance and maintainability in a Superset deployment, consider the following architectural and operational best practices:



9. Common Challenges

Despite its powerful features, Superset adoption may present both technical and organizational challenges. Awareness and strategic planning can mitigate these issues effectively.



10. Conclusion

Apache Superset stands at the forefront of modern open-source business intelligence solutions, offering a powerful blend of flexibility, performance, and user-centric design. Its evolution from an internal Airbnb project to a top-level Apache Foundation tool is a testament to its maturity, active community, and growing adoption across industries.

This whitepaper has explored Superset's architecture, core capabilities, data ecosystem compatibility, and its ability to serve both technical and non-technical users through intuitive, scalable analytics. From no-code visualizations to advanced SQL workflows, Superset bridges the gap between data engineering and decision-making.

Real-world implementations across companies like Airbnb, Lyft, and Dropbox highlight how Superset enables faster iteration, cost-effective deployments, and greater control compared to proprietary BI platforms. Whether deployed on the cloud or self-hosted, its plugin-driven architecture and security model make it suitable for a wide range of enterprise contexts.

As data continues to be the foundation of strategic advantage, Apache Superset positions itself not just as a tool but as an ecosystem enabler for modern, data-driven organizations. For teams seeking open, extensible, and future-ready analytics infrastructure, Superset offers a compelling choice to build upon.

About Us

MethodHub is a global Information Technology services provider offering next-gen business solutions to enhance the digital transformation journey of its clients across the globe. With 30+ customers and over 500 employees globally who bring domain expertise and experience in advanced technologies, MethodHub is in the USA, India, Canada, and Thailand. With capabilities in Cloud Engineering, Data Services, Cyber Security, and ERP/CRM integration, MethodHub aspires to service large enterprises across the globe through a combination of consulting, delivery, fulfillment, support services, and execution capabilities.

MethodHub serves verticals such as BFSI, Health care and life sciences, Oil & Gas/Energy, Telecom/Tech Infra, Automotive & Transport, and Platform Engineering. We offer a unique blend of expertise and innovation that helps companies revolutionize technology, reimagine processes, and transform experiences to stay ahead in this fast-changing world.

With a widespread network and a team of seasoned professionals, we deliver results on a large scale. Our solution experts understand the nuances of local presence and tailor our offerings according to the client's specific needs. Look no further than MethodHub for your digital transformational needs.

Data Practice Team

1. Vijayakumar Natarajan – Data Practice Head
2. Shreyan Krishnaa M
3. Vishwandhini D

Email: datappractice@method-hub.com

Thank You